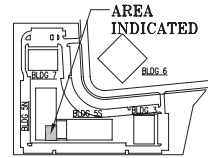


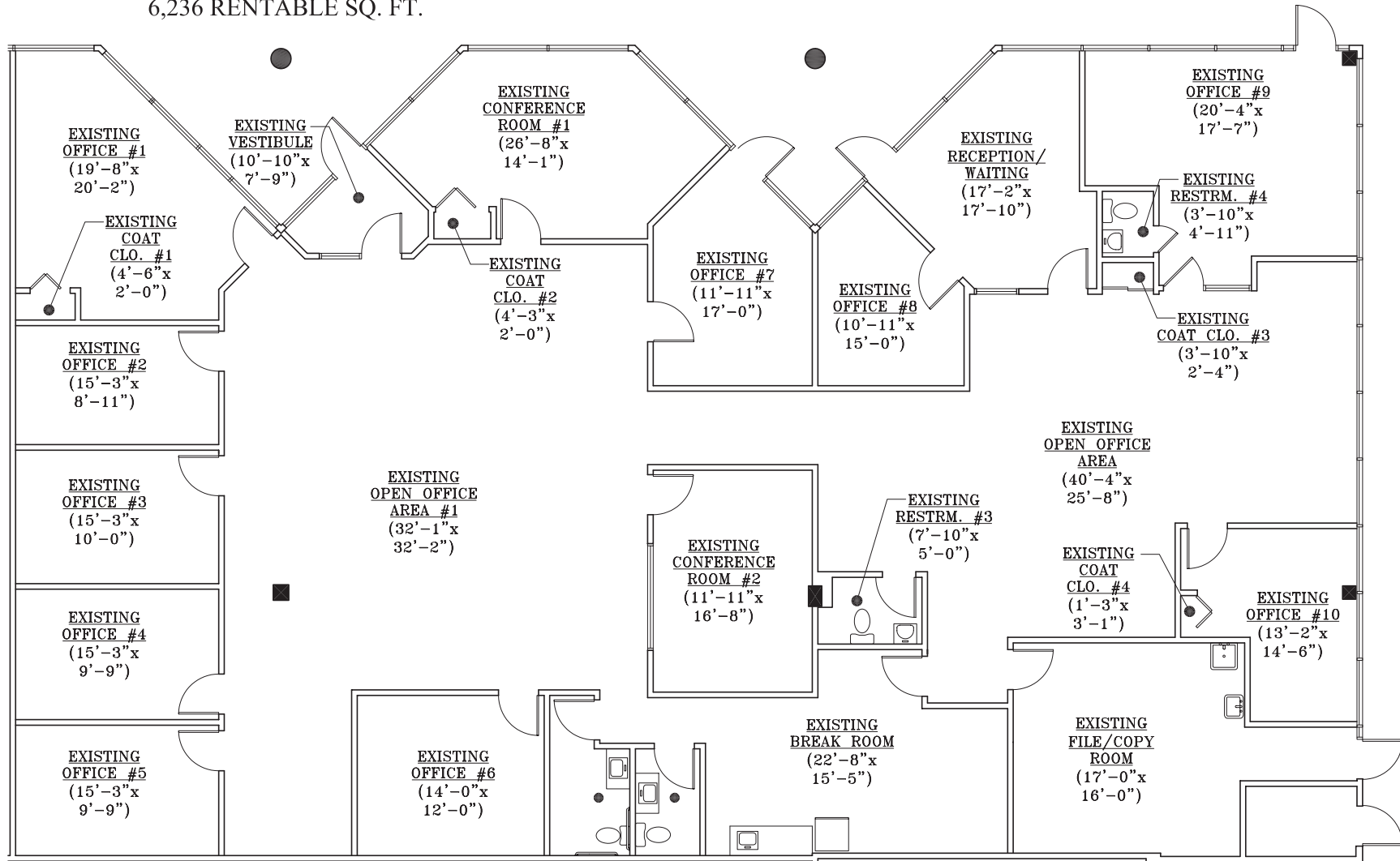
REGENT PARK

5N REGENT ST.
LIVINGSTON, NEW JERSEY
SUITES#: 509 & 511
6,236 RENTABLE SQ. FT.



KEY PLAN - FIRST FLOOR
SCALE : N.T.S.

NOTE:
1. ALL ROOM SIZES ARE APPROXIMATE.



651 WEST MOUNT PLEASANT AVENUE
LIVINGSTON, NJ 07039-1667
T: (973) 992-7727
F: (973) 992-3084
WWW.EASTMANCOMPANIES.COM

FOR MORE INFORMATION, PLEASE CONTACT
ERIC J. MAURER, DIRECTOR OF LEASING
T: (973) 488-6110
F: (973) 992-3084
E: ERICM@EASTMANCOMPANIES.COM