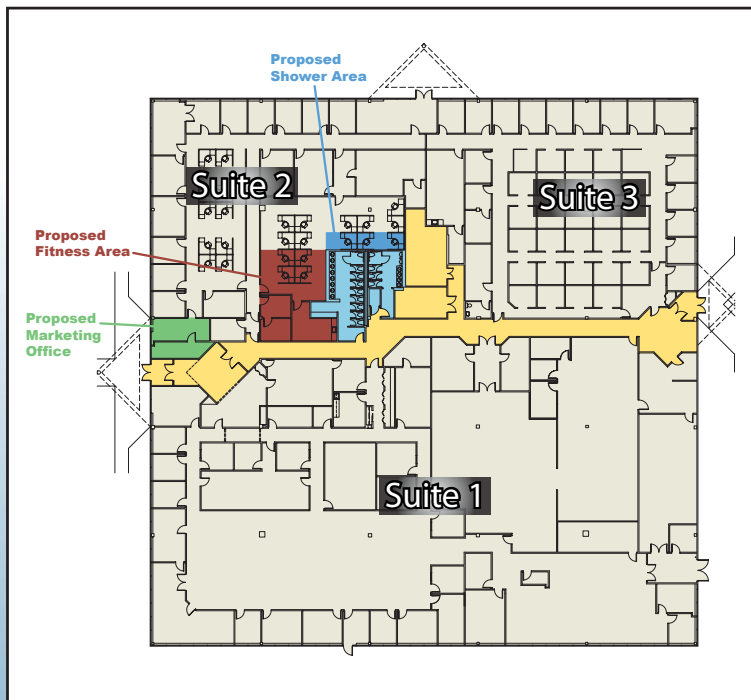




Regent Park
6 Regent Street
Livingston, New Jersey

42,000 Square Feet



6 Regent Street:

- 42,000 square feet available
- Full-service cafe
- Day care on-site
- Campus-like setting
- Immediate access to I-280 and Route 10
- Tenant-controlled HVAC

For more information, please contact Eric J. Maurer, *Director of Leasing*

V: (973) 488-6110 • F: (973) 992-3084 • Email: ericm@eastmancompanies.com

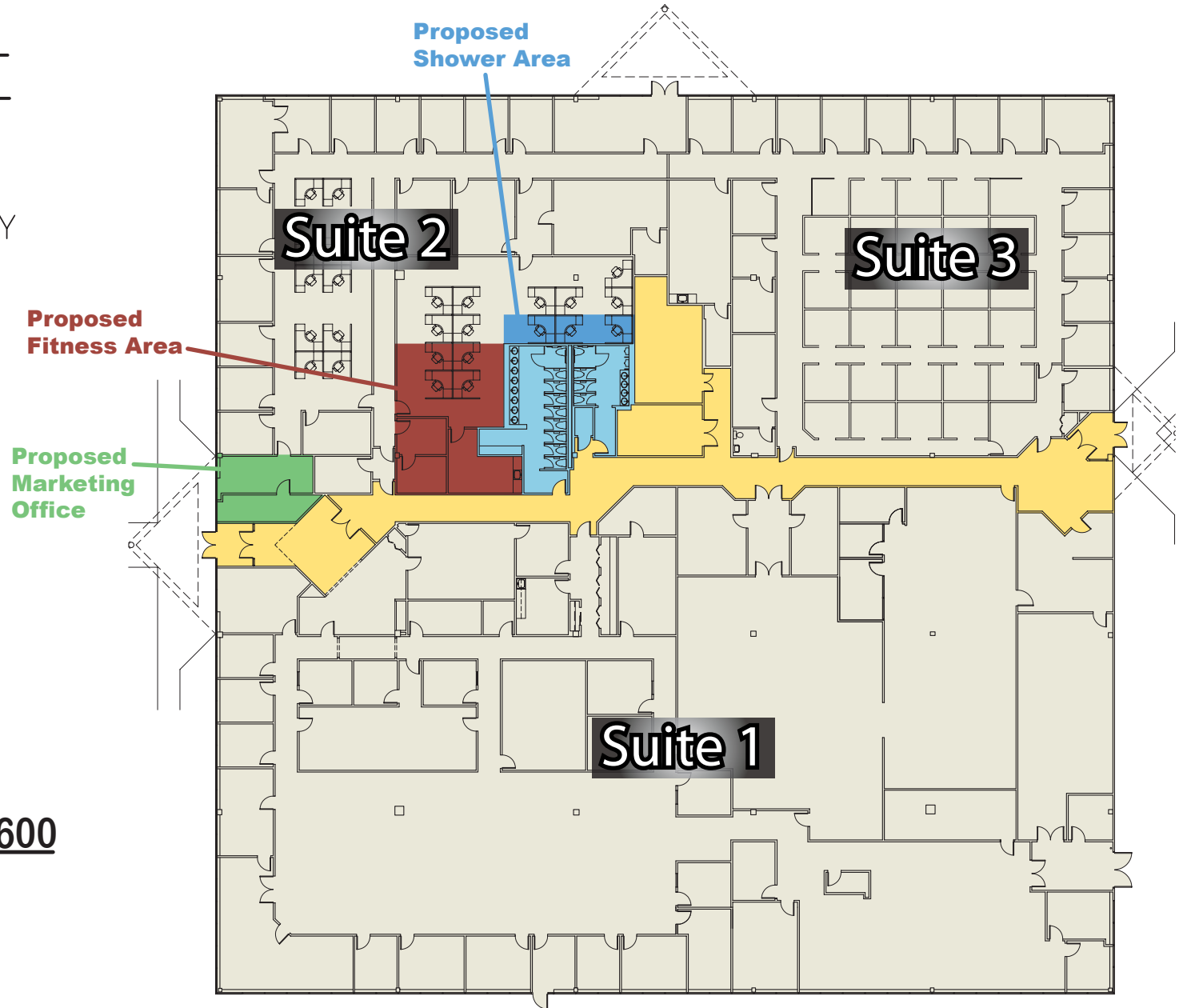
www.eastmancompanies.com

REGENT STREET OFFICE PARK

REGENT STREET
LIVINGSTON, NEW JERSEY

42,000
RENTABLE SF

FLOOR PLAN SUITE 600



651 WEST MOUNT PLEASANT AVENUE
LIVINGSTON, NJ 07039-1667
T: (973) 992-7727
F: (973) 992-3084
WWW.EASTMANCOMPANIES.COM

FOR MORE INFORMATION, PLEASE CONTACT
ERIC J. MAURER, DIRECTOR OF LEASING
T: (973) 488-6110
F: (973) 992-3084
E: ERICM@EASTMANCOMPANIES.COM